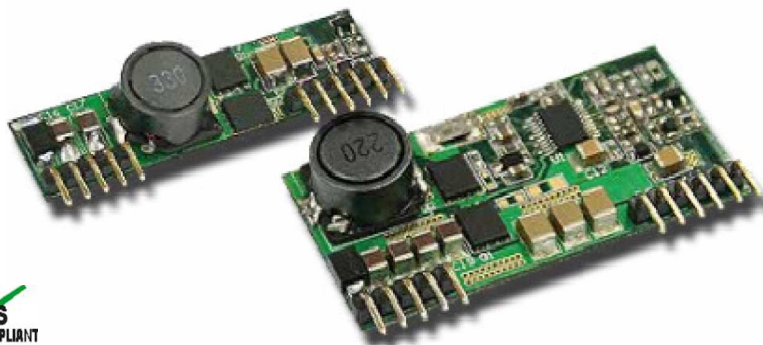


DC-DC Converter UNIT

OSNxxW SERIES

FEATURES

- 5-24V out / 2-4 Amp SIP Package
- 20-53V,30-53V InputVoltage
- High efficiency 97%
- Cost efficient open frame design
- 2 YEARS WARRANTY
- RoHS compliant
- Single output
- Non isolation
- Different output voltage



OUTPUT SPECIFICATIONS

Voltage Set point Accuracy	+/-2% max
Ripple & Noise (20MHz BW) ¹	5V 100mVp-p max 12V-24V 1%Vp-p max
Line Regulation ²	+/-0.5% max
Load Regulation ³	+/-0.5% max
Temperature Coefficient	+/-0.5% max
Short Circuit Protection	Continuous
Over Load Protection	120%-220% Typ

ENVIRONMENTAL SPECIFICATIONS

Operating Temperature	-25 °C to +70 °C
Storage Temperature	-55 °C to +125 °C
Humidity	95% max

INPUT SPECIFICATIONS

Input Voltage Range	20-53V, 30-53V
Input Filter	Capacitive
Remote On/Off Control	Table 1
Protection	Fuse Recommended

GENERAL SPECIFICATIONS

Efficiency	90% min
Switching Frequency	250KHz Typ
Isolation voltage	Non-isolation
Weight OSN02W-xxSxxRx	7,5 g Typ
Weight OSN04W-xxSxxRx	12.0g Typ
SIP Package	
OSN02W-xxSxxRx	50.8mm*13.0mm*10.7mm
OSN04W-xxSxxRx	50.8mm*26.0mm*10.7mm

ALL SPECIFICATIONS TYPICAL AT NOMINAL LINE, FULL LOAD , AND 25 °C UNLESS OTHERWISE NOTED.

[1] The value includes the deviation from output voltage setting point, line and load.

[2] High Line to Low Line.

[3] Load Regulation is for output load current change from 10% to 100% Load

[4] Refer to the Derating Chart.

Power Systems – The Power Solution

Web: www.Power-Systems.de
 Email: Info@Power-Systems.de

Address: Hauptstr. 48 ; 74360 Ilsfeld-Auenstein / Germany
 Tel. : + 49 / 70 62 / 67 59 - 6
 Fax: + 49 / 70 62 / 67 59 - 800

DC-DC Converter UNIT

OSNxxW SERIES

●SELECTION GUIDE 2Amp SIP Packages

MODEL NUMBER	INPUT VOLTAGE (VDC)	OUTPUT VOLTAGE (VDC)	OUTPUT CURRENT (A)	INPUT ^[5] CURRENT(mA)		EFF (%) ^[6]	Package
				FULL LOAD	NO LOAD		
OSN02W-24S05	20-53	5	2.5A	580	15	91	A
OSN02W-24S12	20-53	12	2.5A	1320	14	96	A
OSN02W-24S15	20-53	15	2A	1300	15	96	A
OSN02W-48S24	30-53	24	1.25A	700	30	94	A

Note: Other input to output voltages may be available. Please contact factory.

Note 1: External with input capacitors = 22uF/100V (CHEMICON KMF series)

Note 2: External with output capacitor = 100uF/25V (CHEMICON KY series)

●SELECTION GUIDE 4Amp SIP Packages

MODEL NUMBER	INPUT VOLTAGE (VDC)	OUTPUT VOLTAGE (VDC)	OUTPUT CURRENT (A)	INPUT ^[7] CURRENT(mA)		EFF (%) ^[8]	Package
				FULL LOAD	NO LOAD		
OSN04W-24S05	20-53	5	4A	935	15	90	B
OSN04W-24S12	20-53	12	4A	2110	20	95	B
OSN04W-24S15	20-53	15	4A	2590	20	96	B
OSN04W-48S24	30-53	24	2.5A	1320	30	95	B

Note: Other input to output voltages may be available. Please contact factory.

Note 1: External with input capacitors = 22uF/100V (CHEMICON KMF series)

Note 2: External with output capacitor = 100uF/25V (CHEMICON KY series)

[5] Nominal Input voltage.

[6] Nominal Input voltage, full load.

[7] Nominal Input voltage.

[8] Nominal Input voltage, full load.

Power Systems – The Power Solution

Web: www.Power-Systems.de
 Email: Info@Power-Systems.de

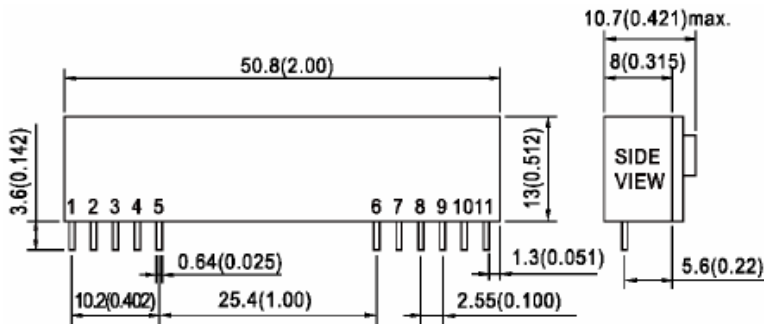
Address: Hauptstr. 48 ; 74360 Ilsfeld-Auenstein / Germany
 Tel. : + 49 / 70 62 / 67 59 - 6
 Fax: + 49 / 70 62 / 67 59 - 800

DC-DC Converter UNIT

OSNxxW SERIES

MECHANICAL DIMENSIONS & RECOMMENDED FOOTPRINT DETAILS

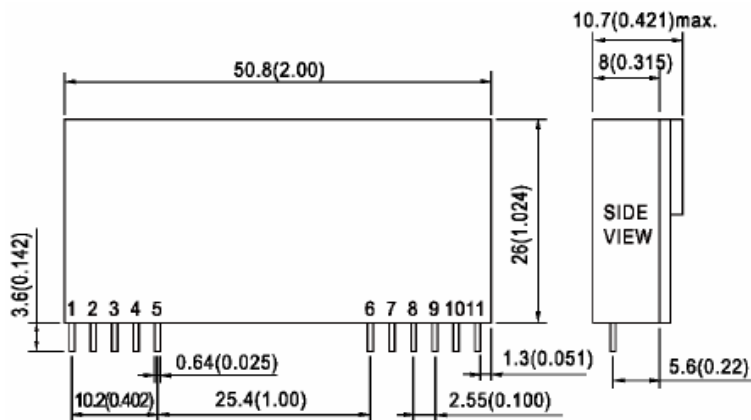
OSN02W-xxSxxRx SERIES PACKAGE "A"



All dimensions are in millimeters [inches]

PIN	Single
1,2,3,4	+Vout
5,6	Common
7,8	+Vin
9,10	NC
11	On/Off Control

OSN04W-xxSxxRx SERIES PACKAGE "B"



All dimensions are in millimeters [inches]

Pin	Single
1,2,3,4	+Vout
5,6	Common
7,8	+Vin
9,10	NC
11	On/Off Control

Power Systems – The Power Solution

Web: www.Power-Systems.de
 Email: Info@Power-Systems.de

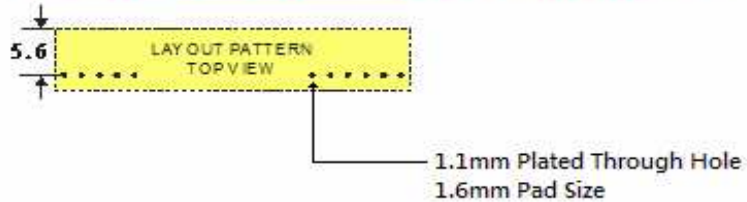
Address: Hauptstr. 48 ; 74360 Ilsfeld-Auenstein / Germany
 Tel. : + 49 / 70 62 / 67 59 - 6
 Fax: + 49 / 70 62 / 67 59 - 800

DC-DC Converter UNIT

OSNxxW SERIES

RECOMMEND FOOTPRINT DETAILS

OSN02W-xxSxxRx SERIES PACKAGE "A"



OSN04W-xxSxxRx SERIES PACKAGE "B"

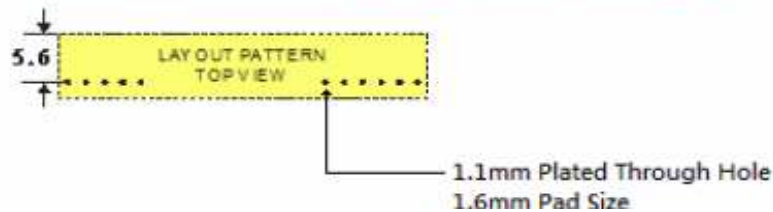
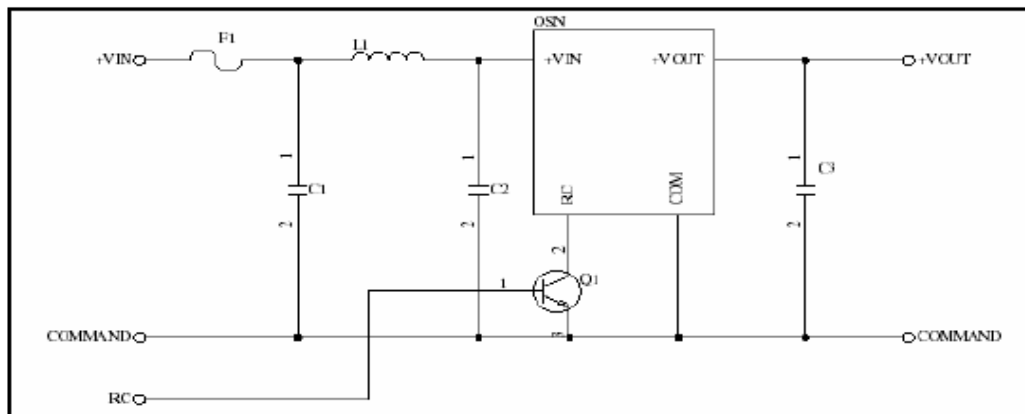


TABLE 1

Remote On/Off Control Voltage	
Output Power on	3.3~12Vdc or open circuit
Output Power off	0~0.4Vdc or short circuit pin 11 and 5,6

TECHNICAL NOTES



Power Systems – The Power Solution

Web: www.Power-Systems.de
Email: Info@Power-Systems.de

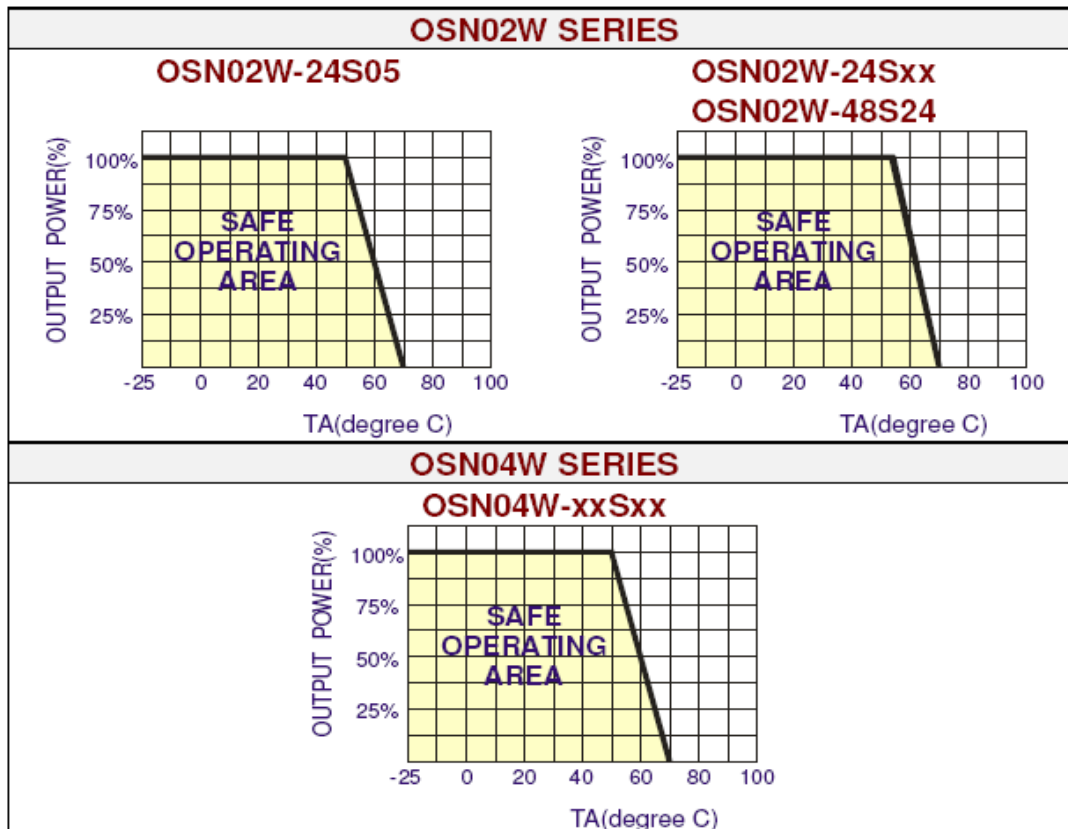
Address: Hauptstr. 48 ; 74360 Ilsfeld-Auenstein / Germany
Tel. : + 49 / 70 62 / 67 59 - 6
Fax: + 49 / 70 62 / 67 59 - 800

DC-DC Converter UNIT

OSNxxW SERIES

	OSN02W-xxSxx	OSN04W-xxSxx
F1	3000mA Slow-Blow Type	5000mA Slow-Blow Type
L1	SCD0503 2.2 uH	SCD0503 1.0 uH
C1	22uF/100V (CHEMICON KMF series)	22uF/100V (CHEMICON KMF series)
C2	22uF/100V (CHEMICON KMF series)	22uF/100V (CHEMICON KMF series)
C3	100uF/25V (CHEMICON KY series)	100uF/25V (CHEMICON KY series)
Q1	On/Off pin open: Logic High = DC/DC converter on On/Off pin <0.4V: Logic Low = DC/DC converter off	On/Off pin open: Logic High = DC/DC converter on On/Off pin <0.4V: Logic Low = DC/DC converter off

● DERATING CURVE



Power Systems – The Power Solution

Web: www.Power-Systems.de
Email: Info@Power-Systems.de

Address: Hauptstr. 48 ; 74360 Ilsfeld-Auenstein / Germany
Tel. : + 49 / 70 62 / 67 59 - 6
Fax: + 49 / 70 62 / 67 59 - 800