

Stand: 29/09

Wide input range 1:2  
 Case Style: SIP 7  
 PWM - regulated

## AUTOMOTIVE DC/DC Converters base insulation

2 Watt  
 Series: S7W2

**Electrical specifications:**

to various EN/UL/CSA-regulations for those converters voltage on either input/output-voltage higher than 60VDC less than 120VDC

Input voltage: wide 1:2  
 Output voltage accuracy: +/- 2%  
 Line regulation: +/- 0,2%  
 Load regulation: +/- 1%  
 Ambient temperature: -55°C to +85°C  
 Operating temperature: max. +105°C

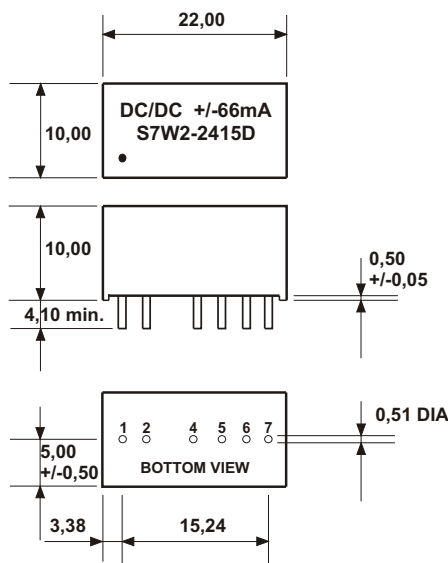
Efficiency: min. 65%  
 Output Ripple & Noise: typ. 150mVp-p  
 Short circuit protection: fully protected  
 Insulation test voltage: 1500V DC  
 Optional:  
 Part-Nr. /H  
 Part-Nr. /J

Alternate pin configuration  
 External -IN & -OUT/COM  
 connection allowed

**CAUTION: NO INPUT POLARITY CHANGE ALLOWED!**

Part - No. Single	Input Voltage	Output Voltage	Output current	Part - No. Dual	Input Voltage	Output Voltage	Output current
S7W2-1205 S7W2-1212 S7W2-1215 S7W2-1224	9 - 18V	5V 12V 15V 24V	400mA 166mA 133mA 83mA	S7W2-1205D S7W2-1212D S7W2-1215D S7W2-1224D	9 - 18V	+/- 5V +/-12V +/-15V +/-24V	+/-200mA +/- 83mA +/- 66mA +/- 42mA
S7W2-2405 S7W2-2412 S7W2-2415 S7W2-2424	16 - 36V	5V 12V 15V 24V	400mA 166mA 133mA 83mA	S7W2-2405D S7W2-2412D S7W2-2415D S7W2-2424D	16 - 36V	+/- 5V +/-12V +/-15V +/-24V	+/-200mA +/- 83mA +/- 66mA +/- 42mA
S7W2-4805 S7W2-4812 S7W2-4815 S7W2-4824	36 - 72V	5V 12V 15V 24V	400mA 166mA 133mA 83mA	S7W2-4805D S7W2-4812D S7W2-4815D S7W2-4824D	36 - 72V	+/- 5V +/-12V +/-15V +/-24V	+/-200mA +/- 83mA +/- 66mA +/- 42mA

**Any other output voltages available**



PIN CONNECTION					
PIN	SINGLE	SINGLE A*	SINGLE /H*	DUAL	DUAL /H*
1	VCC	VCC	VCC	VCC	VCC
2	GND	GND	GND	GND	GND
3	NP	NP	NP	NP	NP
4	NC	-Vout	NP	-Vout	NP
5	-Vout	NP	-Vout	COM	-Vout
6	+Vout	+Vout	NP	+Vout	COM
7	NP	NP	+Vout	NP	+Vout

\* For other pinning add "A" or "/H" to the end of partnumber for example: S7W2-2405A, S7W2-2415D

ALL DIMENSIONS IN MM  
 MILLIMETERS +/- 0,25mm  
 All pins on a 2,54mm pitch  
 Note: NP = No pin; NC = No connection;  
 Dot denotes pin 1

Output capacitor is a must  
 Input capacitor 4,7µF - 10µF is a must

Specification may be changed without notice  
 please contact office for verification

We can offer EMC - Filter  
 according to EN55011/22 Class B.

Wide input range 1:2  
 Case Style: SIP 7

# AUTOMOTIVE DC/DC Converters PWM - regulated

1 - 1,6 Watt  
 Series: S7W2

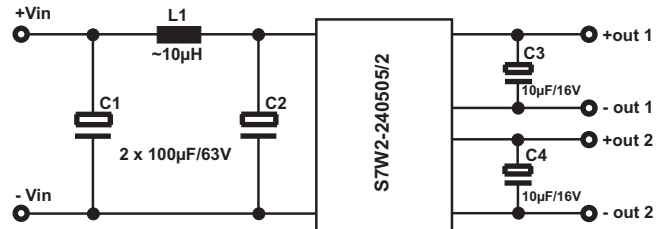
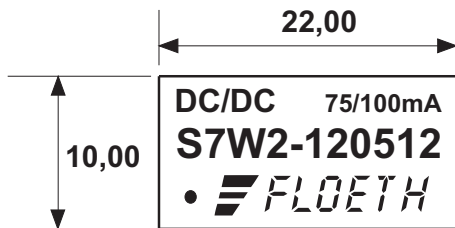
**Electrical specifications:**

Input voltage:	wide 1:2	Short circuit protection:	continuous
Output voltage accuracy:	+/- 2%	Ambient temperature:	-55°C to +85°C
Line Vin/Vout:	+/- 0,2%	Operating temperature max.:	+105°C
Load regulation:	+/- 1% for regulated	Insulation test voltage:	1500V DC
Efficiency:	approx. 70%	Optional:	
Output Ripple & Noise:	typ. 150mVp-p	Partr No./2:	separate Dual output I/O 1500V DC O/O 1000V DC

**CAUTION NO INPUT POLARITY CHANGE ALLOWED!**

Part - No. Dual	Input Voltage	Output 1 Voltage	Output 1 current	Output 2 Voltage	Output 2 current
** S7W2-120512	9 - 18V	5V regulated	75mA	12V unregulated	100mA
S7W2-240505	18 - 36V	5V regulated	200mA	5V unregulated	50mA

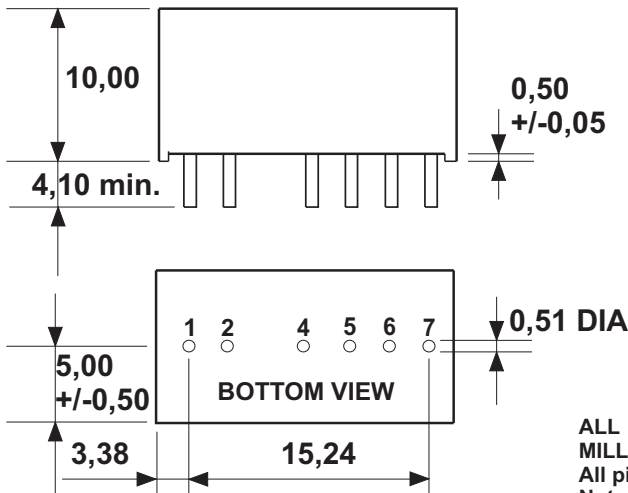
**Any other output voltages available**



S7W2-240505 output 1 ground load: 70mA is a must

\*\*Input capacitor 4,7µF - 10µF is a must

Output capacitor 5V / 22µF/16V Tantal // 12V / 10µF/25V Tantal is a must



PIN CONNECTION		
PIN	DUAL	* DUAL /2
1	VCC	VCC
2	GND	GND
3	NP	NP
4	+12V	- OUT2
5	COM	+OUT2
6	+5V	- OUT1
7		+OUT1

\* For other pinning:  
 Add "/2" to the end of Partnumber  
 For example S7W2-120512/2 1,6W

ALL DIMENSIONS IN MM  
 MILLIMETERS +/- 0,25mm  
 All pins on a 2,54mm pitch  
 Note: NP = No pin; NC = No connection;  
 Dot denotes pin 1

Specification may be changed without notice  
 please contact office for verification

We can offer EMC - Filter  
 according to EN55011/22 Class B.